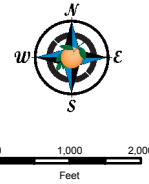


Shingle Creek Trail (Orange County)



Trail By Orange County

- █ Phase 1 Segment 1
- █ Phase 1 Segment 2 and 3
- █ Phase 2
- █ Phase 3

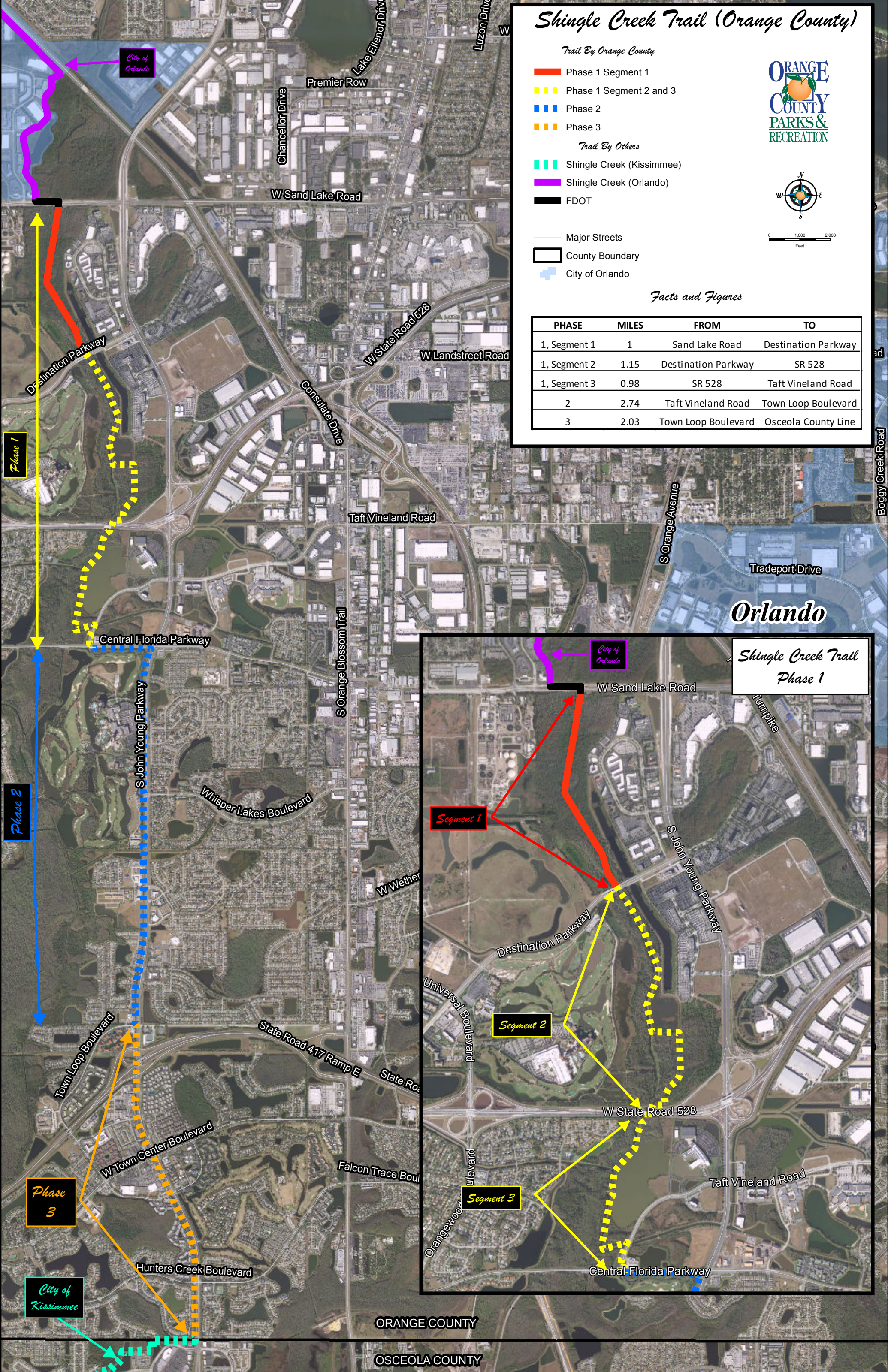
Trail By Others

- █ Shingle Creek (Kissimmee)
- █ Shingle Creek (Orlando)
- █ FDOT

- Major Streets
- County Boundary
- + City of Orlando

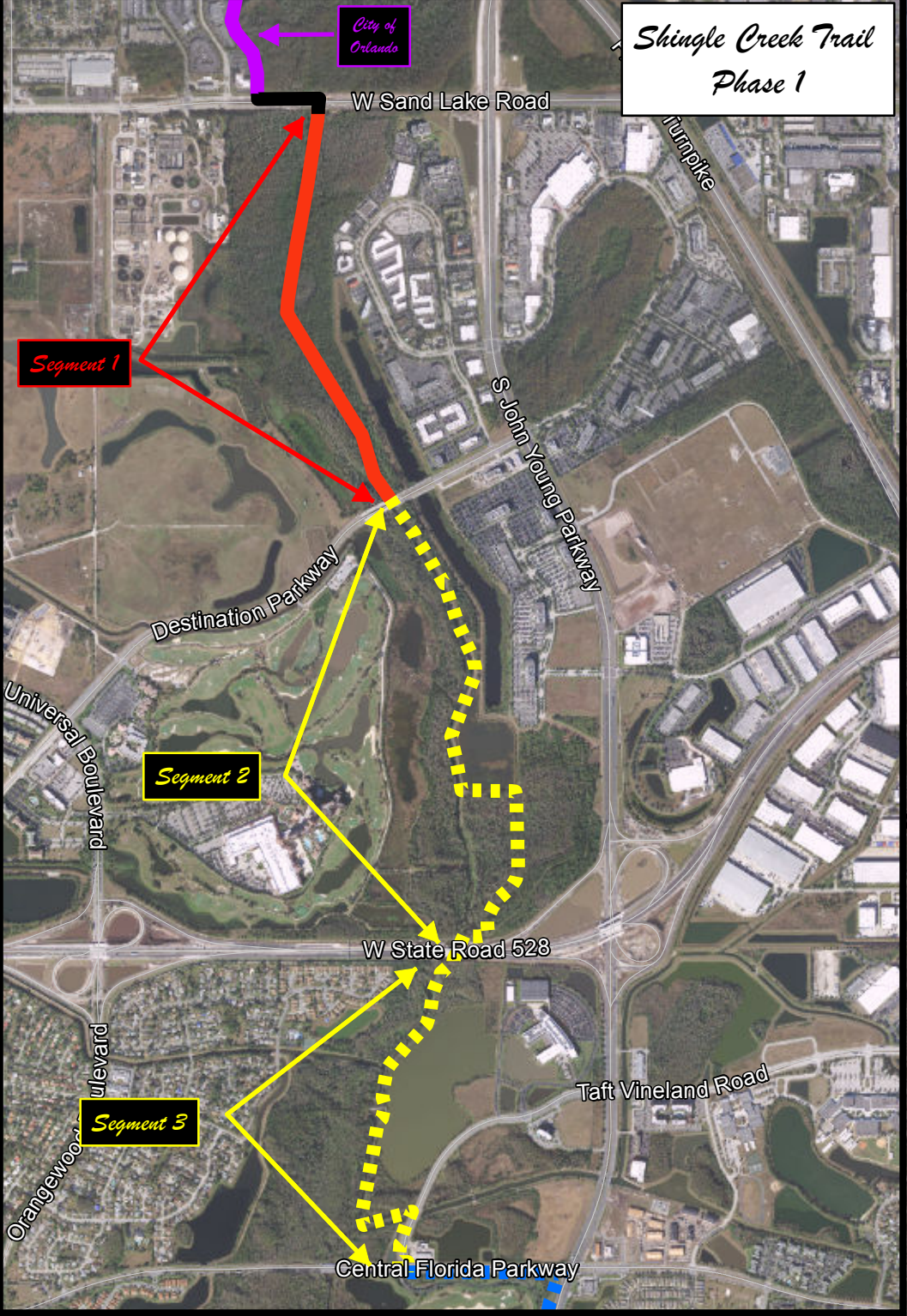
Facts and Figures

| PHASE | MILES | FROM | TO |
|--------------|-------|---------------------|---------------------|
| 1, Segment 1 | 1 | Sand Lake Road | Destination Parkway |
| 1, Segment 2 | 1.15 | Destination Parkway | SR 528 |
| 1, Segment 3 | 0.98 | SR 528 | Taft Vineland Road |
| 2 | 2.74 | Taft Vineland Road | Town Loop Boulevard |
| 3 | 2.03 | Town Loop Boulevard | Osceola County Line |



Orlando

*Shingle Creek Trail
Phase 1*



ORANGE COUNTY

OSCEOLA COUNTY